



MY DOG HAS MANGE

YOUR ANIMAL HEALTH PROFESSIONAL

What is mange?

One kind lives just under the surface of the skin, while the other resides deep in the hair follicles.

Although both mites share similar characteristics, your vet can recognise important differences. It is essential you know exactly which mite is attacking your dog, because the two types of mange have different causes, treatments, and prognoses.

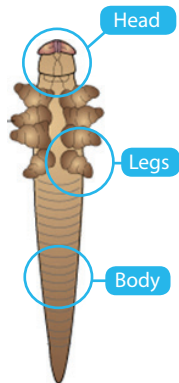
Demodectic mange, sometimes called "demodex" or "red mange", is caused by the *Demodex canis*, a parasite that lives in the hair follicles of dogs.

All normal dogs (and many humans) have a few of these mites on their skin. As long as the body's immune system is functioning properly, these mites cause no harm.

Demodectic mange **is not** contagious to other animals or humans. It is passed on to the puppy by its mother soon after birth. Adult dogs that have the disease usually have defective immune systems.

Mange is a parasitic skin disease caused by microscopic mites

Mange Mite



Your vet will take deep skin scrapings and examine them under the microscope to diagnose this disease



Tauranga
07 578 4044

For more information visit www.getvets.co.nz



YOUR ANIMAL HEALTH PROFESSIONAL

How is demodectic mange treated?

The localised form is usually treated with medication applied directly to the infected skin. The generalised form requires more aggressive treatment using special shampoos and dips, along with oral medication.

Shampooing with special cleansing shampoos

containing antibacterials (Malaseb or Pyohex) reduces the bacteria on the skin that can cause secondary skin infections. In some cases, such as dogs with generalised demodectic mange, secondary skin infections complicate the condition, requiring antibiotic therapy.

At Tauranga Vets, your dog will be treated with:

- A weekly injection of an anti-parasitic medication to kill the mites
- Antibiotics for any secondary bacterial skin infection
- Anti-inflammatories to settle down the itchiness

HANDY TIPS

It is advisable to use a medicated wash at least once a week – leave this on for 5-10 minutes to allow time for the bacteria to be killed before washing it off thoroughly.

Feeding a high-quality food will help improve your dog's skin condition in general, so your pet recovers faster.



Tauranga 07 578 4044
Te Puna 07 552 4015
Katikati 07 549 0215

For more information visit www.getvets.co.nz